

Expiration date - Protect the earned profit

VN30 performance

The VN30 was added 0.1% to close at 835 pts. Among top 5 index weight tickers, only VIC (+0.5%) and TCB (+0.2%) contributed to the index gains whilst HPG (0%), VPB (-0.2%), and VNM (-0.5%) dragged the benchmark down. Relating to foreign trading activities, over supply remained with net sell value recorded at VND87bn. VHM, VNM, HDB, HPG, and VJC were sold the most whilst VIC, VRE, and VCB absorbed the most foreign demand.

VN30 Future chart: The medium-term uptrend

VN30F2009 maintained the tight movement at the intraday congestion area (835 pts). With the congestion zone, 835 pts level acts as the intraday resistance, 850 pts level plays as short-term resistance followed by 865 pts level (the medium-term resistance). On the downside, 830 pts sets the line in the sand for the intraday upward swing. Besides, MA200 (790 pts zone) will be the last line for the bullish market. As the MA50 and MA200 are moving upward as well as these MAs have maintained the stable degree of separation, the medium-term bullish market is still active and there is no confirmation for the bear. Notably, the breakout at 835 pts zone will increase the tendency for the instrument to retest 850 pts level.

Technical strategy

Long positions captured at 820-825 pts zone should not be closed, take a profit at 865 pts and positions should be out when there is the closing price below 830 pts level to protect the earned profit.

Table 1. Future statistics

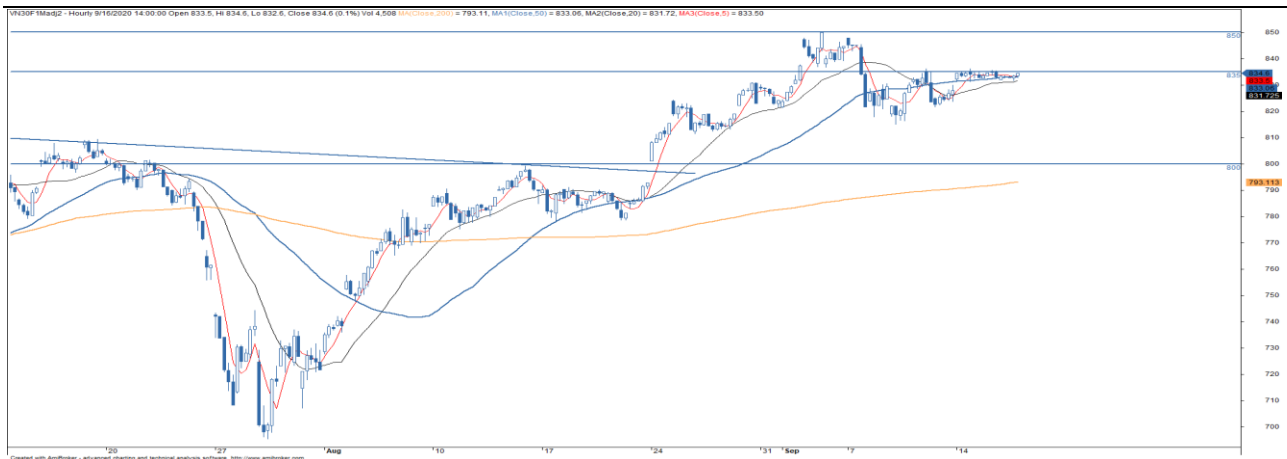
(points, %, contracts)

	Close Price	% chg.	Trading Volume	Open Interest	Fair Value	Expire Date
VN30 Index	834.5	0.1				
VN30F2009	834.6	0.2	56,137	23,266	833	17/09/20
VN30F2010	834.4	0.3	8,447	7,514	681	15/10/20
VN30F2012	828.7	0.2	101	471	640	17/12/20
VN30F2103	828.0	0.7	40	172	642	18/03/21

Source: Bloomberg, KIS

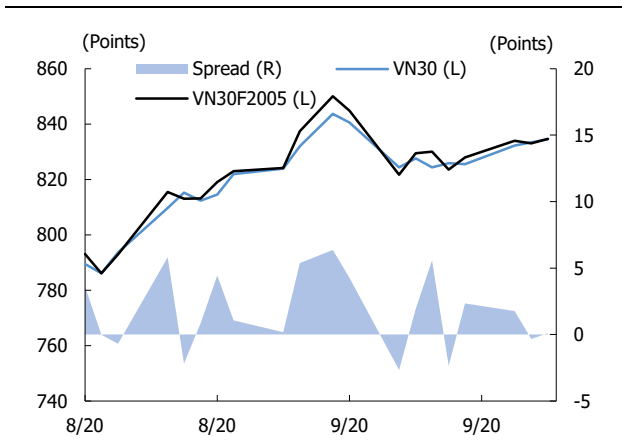
Dang Le
dang.lh@kisvn.vn

Figure 1. VN30 Generics hourly chart



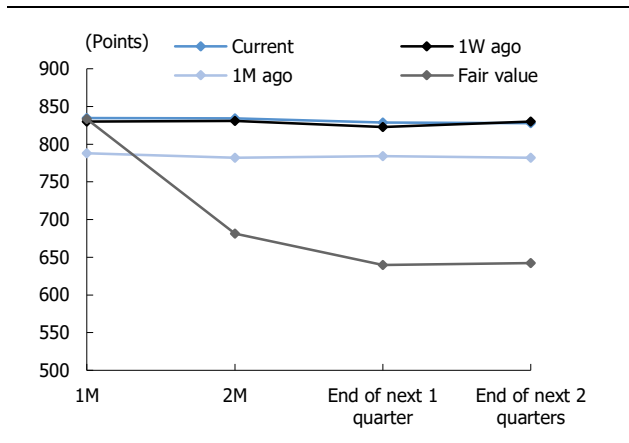
Source: Bloomberg, KIS. Price is adjusted by Proportional Adjustment method

Figure 2. Basis spread



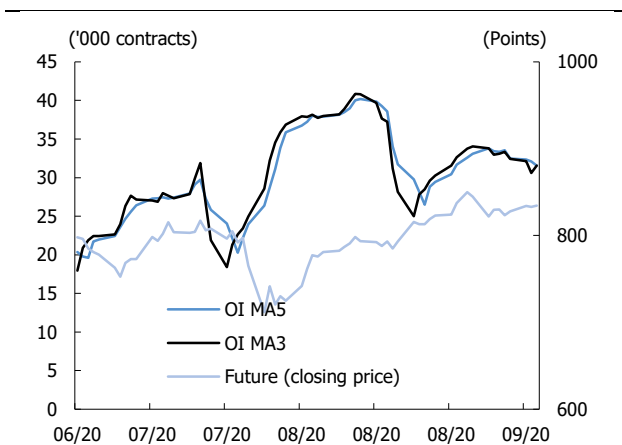
Source: Bloomberg, KIS

Figure 3. Future price curve



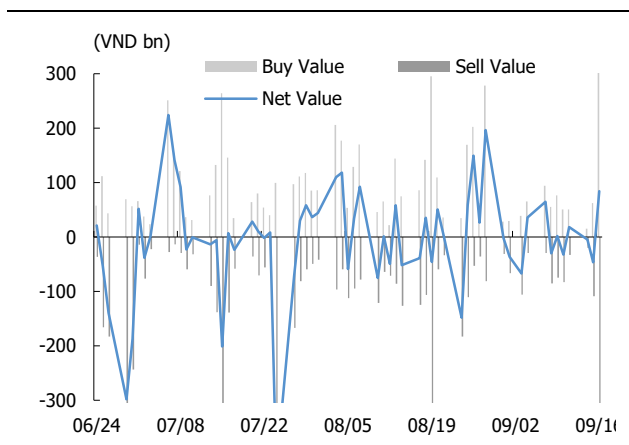
Source: Bloomberg, KIS

Figure 4. Open interest pattern



Source: Bloomberg, KIS

Figure 5. Daily foreign net buy / sell



Source: Bloomberg, KIS

Table 2. VN30 constituent statistics

(VND bn, VND, %, x, '000 shares)

Quote	Name	Industry	Market Cap	Index Weight	Current Price	1D chg	PER	PBR	3M. Vol	Foreign Owned	52W High	52W Low
BID	BIDV	Financials	163,093	1.01	40,550	(0.5)	19.0	2.13	992	17.6	55,800	29,500
CTG	Vietinbank	Financials	93,830	2.91	25,200	(0.8)	8.4	1.17	4,293	30.0	28,450	16,600
EIB	Eximbank	Financials	20,839	2.75	16,950	0.3	29.9	1.29	196	29.9	18,950	14,000
FPT	FPT Corp	Information Technology	39,587	4.92	50,500	1.0	11.8	2.65	1,510	49.0	53,304	34,870
GAS	PetroVietnam Gas	Utilities	137,804	1.07	72,000	(0.4)	13.9	2.63	568	3.3	109,000	53,900
HDB	HDBank	Financials	28,833	3.13	29,850	(0.2)	7.0	1.38	1,032	20.7	30,900	16,100
HPG	Hoa Phat Group	Materials	81,838	7.62	24,700	0.0	9.4	1.56	13,492	34.9	25,200	12,708
KDH	Khang Dien House	Real Estate	13,635	1.27	24,400	(0.4)	12.5	1.78	564	42.8	26,095	16,667
MBB	MBBank	Financials	43,647	4.06	18,100	0.0	5.2	1.00	4,095	23.0	23,900	13,150
MSN	Masan Group Corp	Consumer Staples	64,490	3.50	54,900	(0.9)	16.9	2.77	1,271	38.1	81,000	46,400
MWG	Mobile World Investment Corp	Consumer Discretionary	42,824	4.32	94,600	1.8	11.3	3.00	804	49.0	129,500	56,300
NVL	Novaland	Real Estate	61,951	3.36	63,800	0.0	16.1	2.70	1,284	5.6	65,700	49,100
PLX	Vietnam National Petroleum Group	Energy	61,255	0.86	50,800	2.6	58.6	3.07	1,123	15.8	63,200	35,100
PNJ	Phu Nhuan Jewelry	Consumer Discretionary	13,665	1.70	60,700	1.3	13.1	2.91	521	49.0	92,500	45,000
POW	PetroVietnam Power Corp	Utilities	23,770	0.74	10,150	0.0	10.9	0.85	3,337	11.1	13,950	6,850
REE	REE Corp	Industrials	12,092	0.94	39,000	0.1	8.2	1.15	406	49.0	40,150	26,100
ROS	FLC Faros	Industrials	1,243	0.19	2,190	(0.5)	8.1	0.21	9,368	2.1	27,000	2,050
SAB	Saigon Beer Alcohol Beverage Corp	Consumer Staples	120,689	2.06	188,200	0.0	29.7	6.54	136	63.2	273,000	111,500
SBT	Thanh Thanh Cong - Bien Hoa	Consumer Staples	8,244	0.51	14,050	0.0	25.0	1.13	3,214	5.6	22,700	11,600
SSI	SSI Securities Corp	Financials	9,555	0.89	15,900	0.6	9.3	0.98	5,138	48.3	20,431	9,569
STB	Sacombank	Financials	20,832	3.07	11,550	(0.4)	8.6	0.76	10,008	9.3	12,700	7,120
TCB	Techcombank	Financials	74,903	7.56	21,400	0.2	6.9	1.12	1,773	22.5	25,500	14,000
TCH	Hoang Huy Investment	Industrials	7,260	0.62	20,550	(0.5)	9.1	1.50	3,767	4.6	45,550	16,250
VCB	Vietcombank	Financials	307,466	5.25	82,900	0.5	16.9	3.44	931	23.5	95,000	56,600
VHM	Vinhomes	Real Estate	253,950	4.66	77,200	0.5	11.5	3.72	1,836	22.5	102,300	52,000
VIC	Vingroup	Real Estate	323,022	8.30	95,500	0.5	40.9	3.83	480	13.8	124,700	68,000
VJC	Vietjet Aviation	Industrials	55,998	4.35	106,900	0.0	30.7	3.74	367	17.7	148,800	93,200
VNM	Vinamilk	Consumer Staples	216,279	10.36	124,200	(0.5)	22.4	7.18	1,152	58.5	135,500	83,700
VPB	VPBank	Financials	56,068	6.09	23,000	(0.2)	5.6	1.18	3,374	23.4	29,300	16,000
VRE	Vincom Retail	Real Estate	65,670	1.93	28,900	0.0	27.4	2.37	2,419	30.6	35,850	16,900

Source: Bloomberg, KIS

Global Disclaimer

■ General

This research report and marketing materials for Vietnamese securities are originally prepared and issued by the Research Center of KIS Vietnam Securities Corp., an organization licensed with the State Securities Commission of Vietnam. The analyst(s) who participated in preparing and issuing this research report and marketing materials is/are licensed and regulated by the State Securities Commission of Vietnam in Vietnam only. This report and marketing materials are copyrighted and may not be copied, redistributed, forwarded or altered in any way without the consent of KIS Vietnam Securities Corp..

This research report and marketing materials are for information purposes only. They are not and should not be construed as an offer or solicitation of an offer to purchase or sell any securities or other financial instruments or to participate in any trading strategy. This research report and marketing materials do not provide individually tailored investment advice. This research report and marketing materials do not take into account individual investor circumstances, objectives or needs, and are not intended as recommendations of particular securities, financial instruments or strategies to any particular investor. The securities and other financial instruments discussed in this research report and marketing materials may not be suitable for all investors. The recipient of this research report and marketing materials must make their own independent decisions regarding any securities or financial instruments mentioned herein and investors should seek the advice of a financial adviser. KIS Vietnam Securities Corp. does not undertake that investors will obtain any profits, nor will it share with investors any investment profits. KIS Vietnam Securities Corp., its affiliates, or their affiliates and directors, officers, employees or agents of each of them disclaim any and all responsibility or liability whatsoever for any loss (director consequential) or damage arising out of the use of all or any part of this report or its contents or otherwise arising in connection therewith. Information and opinions contained herein are subject to change without notice and may differ or be contrary to opinions expressed by other business areas or KIS Vietnam Securities Corp. The final investment decision is based on the client's judgment, and this research report and marketing materials cannot be used as evidence in any legal dispute related to investment decisions.

■ Country-specific disclaimer

United States: This report is distributed in the U.S. by Korea Investment & Securities America, Inc., a member of FINRA/SIPC, and is only intended for major U.S. institutional investors as defined in Rule 15a-6(a)(2) under the U.S. Securities Exchange Act of 1934. All U.S. persons that receive this document by their acceptance thereof represent and warrant that they are a major U.S. institutional investor and have not received this report under any express or implied understanding that they will direct commission income to Korea Investment & Securities, Co., Ltd. or its affiliates. Pursuant to Rule 15a-6(a)(3), any U.S. recipient of this document wishing to effect a transaction in any securities discussed herein should contact and place orders with Korea Investment & Securities America, Inc., which accepts responsibility for the contents of this report in the U.S. The securities described in this report may not have been registered under the U.S. Securities Act of 1933, as amended, and, in such case, may not be offered or sold in the U.S. or to U.S. person absent registration or an applicable exemption from the registration requirement.

United Kingdom: This report is not an invitation nor is it intended to be an inducement to engage in investment activity for the purpose of section 21 of the Financial Services and Markets Act 2000 of the United Kingdom ("FSMA"). To the extent that this report does constitute such an invitation or inducement, it is directed only at (i) persons who are investment professionals within the meaning of Article 19(5) of the Financial Services and Markets Act 2000 (Financial Promotion) Order 2005 (as amended) of the United Kingdom (the "Financial Promotion Order"); (ii) persons who fall within Articles 49(2)(a) to (d) ("high net worth companies, unincorporated associations etc.") of the Financial Promotion Order; and (iii) any other persons to whom this report can, for the purposes of section 21 of FSMA, otherwise lawfully be made (all such persons together being referred to as "relevant persons"). Any investment or investment activity to which this report relates is available only to relevant persons and will be engaged in only with relevant persons. Persons who are not relevant persons must not act or rely on this report.

Hong Kong: This research report and marketing materials may be distributed in Hong Kong to institutional clients by Korea Investment & Securities Asia Limited (KISA), a Hong Kong representative subsidiary of Korea Investment & Securities Co., Ltd., and may not otherwise be distributed to any other party. KISA provides equity sales service to institutional clients in Hong Kong for Korean securities under its sole discretion, and is thus solely responsible for provision of the aforementioned equity selling activities in Hong Kong. All requests by and correspondence with Hong Kong investors involving securities discussed in this report and marketing materials must be effected through KISA, which is registered with The Securities & Futures Commission (SFC) of Hong Kong. Korea Investment & Securities Co., Ltd. is not a registered financial institution under Hong Kong's SFC.

Singapore: This report is provided pursuant to the financial advisory licensing exemption under Regulation 27(1)(e) of the Financial Advisers Regulation of Singapore and accordingly may only be provided to persons in Singapore who are "institutional investors" as defined in Section 4A of the Securities and Futures Act, Chapter 289 of Singapore. This report is intended only for the person to whom Korea Investment & Securities Co., Ltd. has provided this report and such person may not send, forward or transmit in any way this report or any copy of this report to any other person. Please contact Korea Investment & Securities Singapore Pte Ltd in respect of any matters arising from, or in connection with, the analysis or report (Contact Number: 65 6501 5600).

Copyright © 2020 KIS Vietnam Securities Corp. All rights reserved. No part of this report may be reproduced or distributed in any manner without permission of KIS Vietnam Securities Corp.